

**NO, NOTHING, NONE**

ANSWERS TO THREE  
CRITICAL QUESTIONS ABOUT  
SUPERVISION of PEER  
SUPPORT WORKERS





# SHARE/SCRA CONFERENCE 2023

Presented by Joanne Forbes,  
Rita Cronise, Gita Enders,  
Jonathan Edwards and Amy Spagnolo

# Presenters

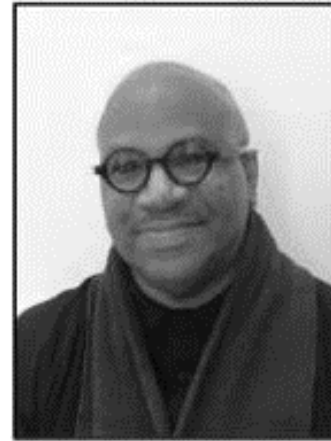
**Jonathan P. Edwards, PhD, LCSW, ACSW, NYCPS**  
Program Consultant, NYC Department of Health and  
Mental Hygiene

**Joanne Forbes, PhD, CPRP**  
Consultant, Author, Board Member Baltic Street AEH

**Amy Spagnolo, PhD**, Associate Professor Rutgers  
University and Program Director Academy of Peer  
Services

**Gita Enders, LMSW, MA, CPRP, NYCPS**  
Director of Peer Services, Office of Behavioral  
Health, New York City Health + Hospitals

**Rita Cronise, MS, ALWF**  
Distance Faculty, Rutgers University Academy of  
Peer Services Virtual Learning Community



# Polling questions

**Question 1-**

Did you volunteer to be a supervisor?  
Yes or No

**Question 2-**

Were any other responsibilities removed to allow time for supervision?  
Plenty, Some things, or Nothing

**Question 3-**

What training in supervising peer support workers have you received?  
Lots, Some, or None



Did you volunteer to be a supervisor?



Were any other responsibilities removed to allow time for supervision?



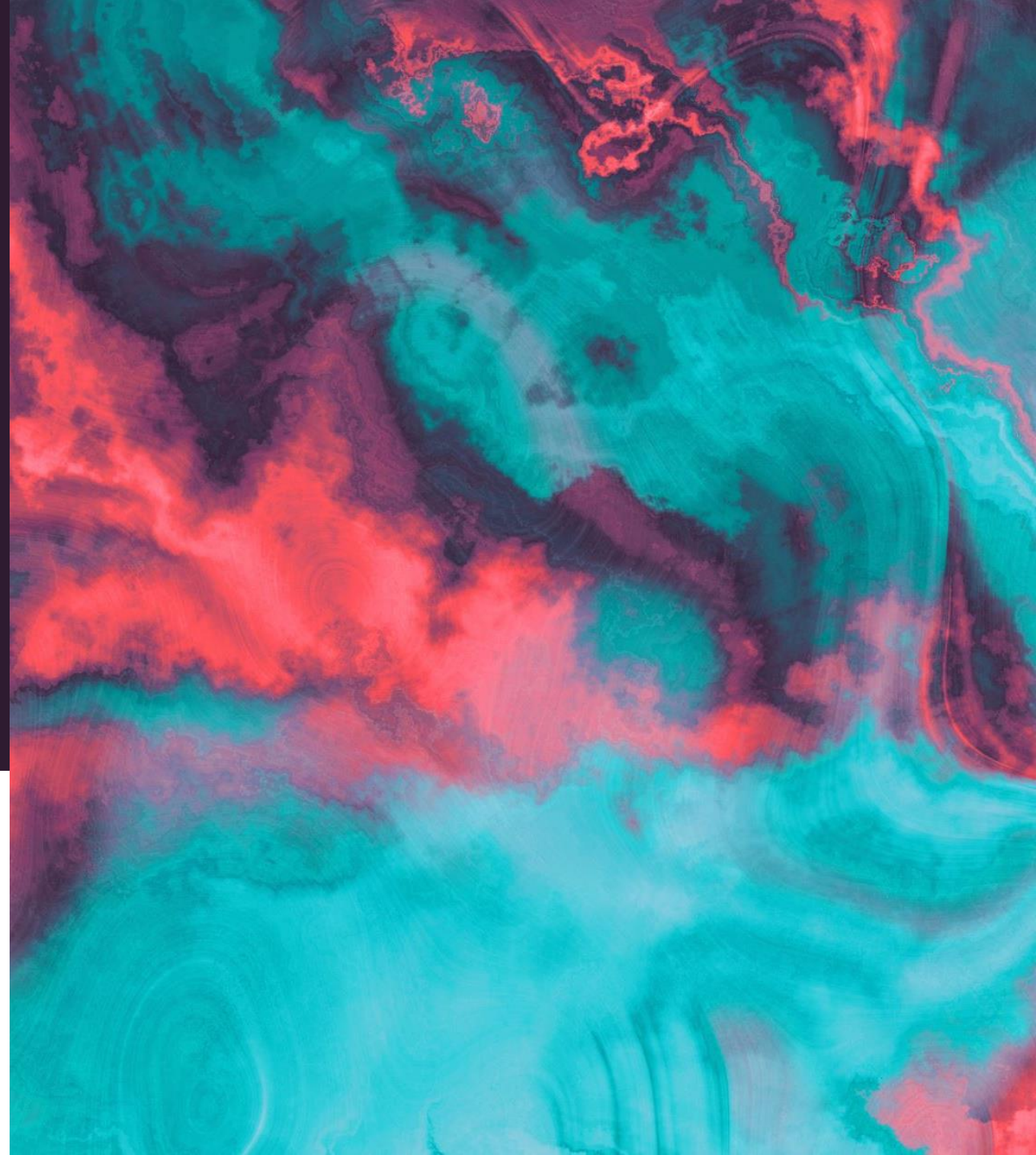
What training have you received in supervising peer support workers?



# Unintended Consequences

What happens when answers to the  
three critical questions are no,  
nothing, and none?

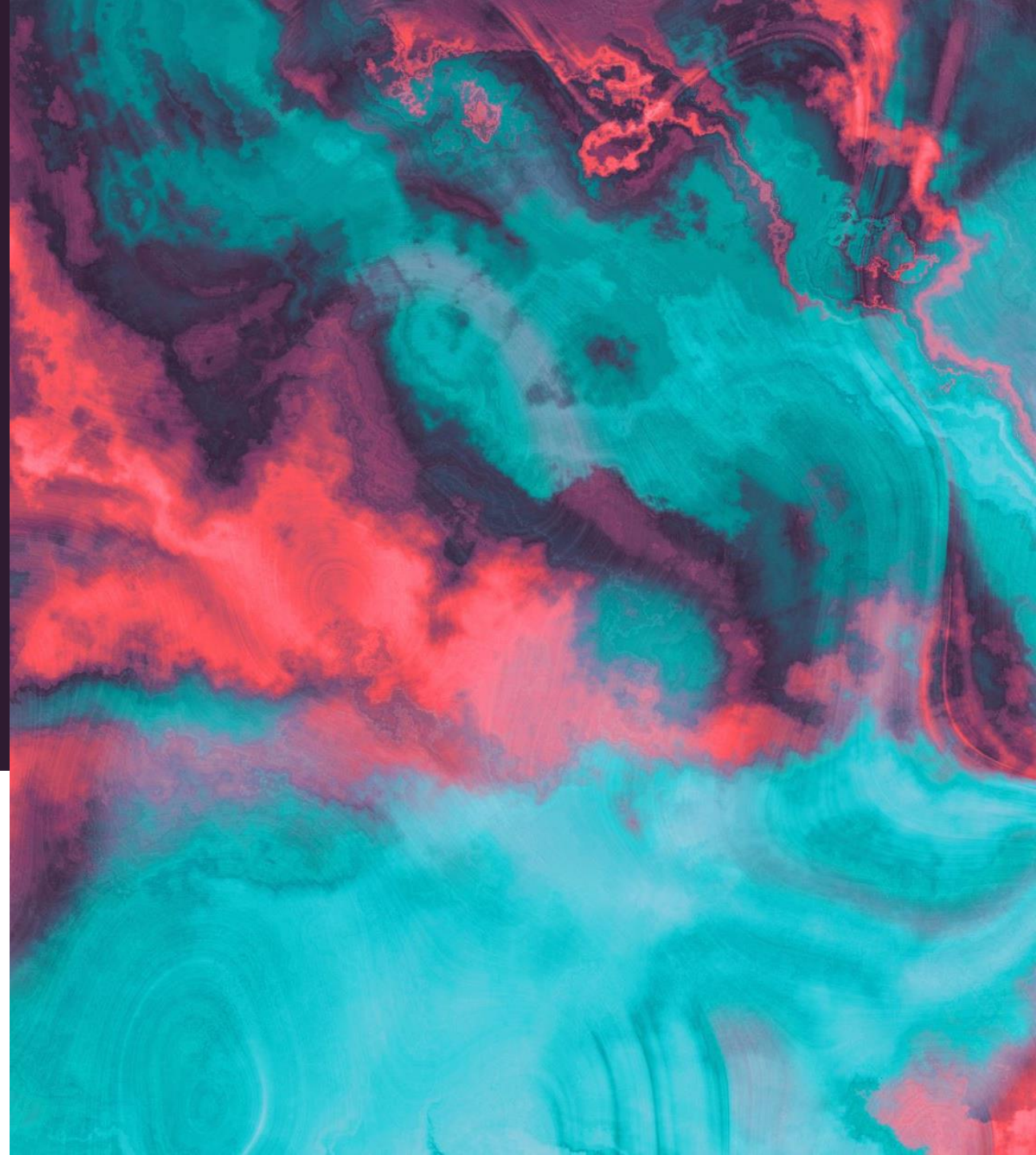
Chat and answers from audience





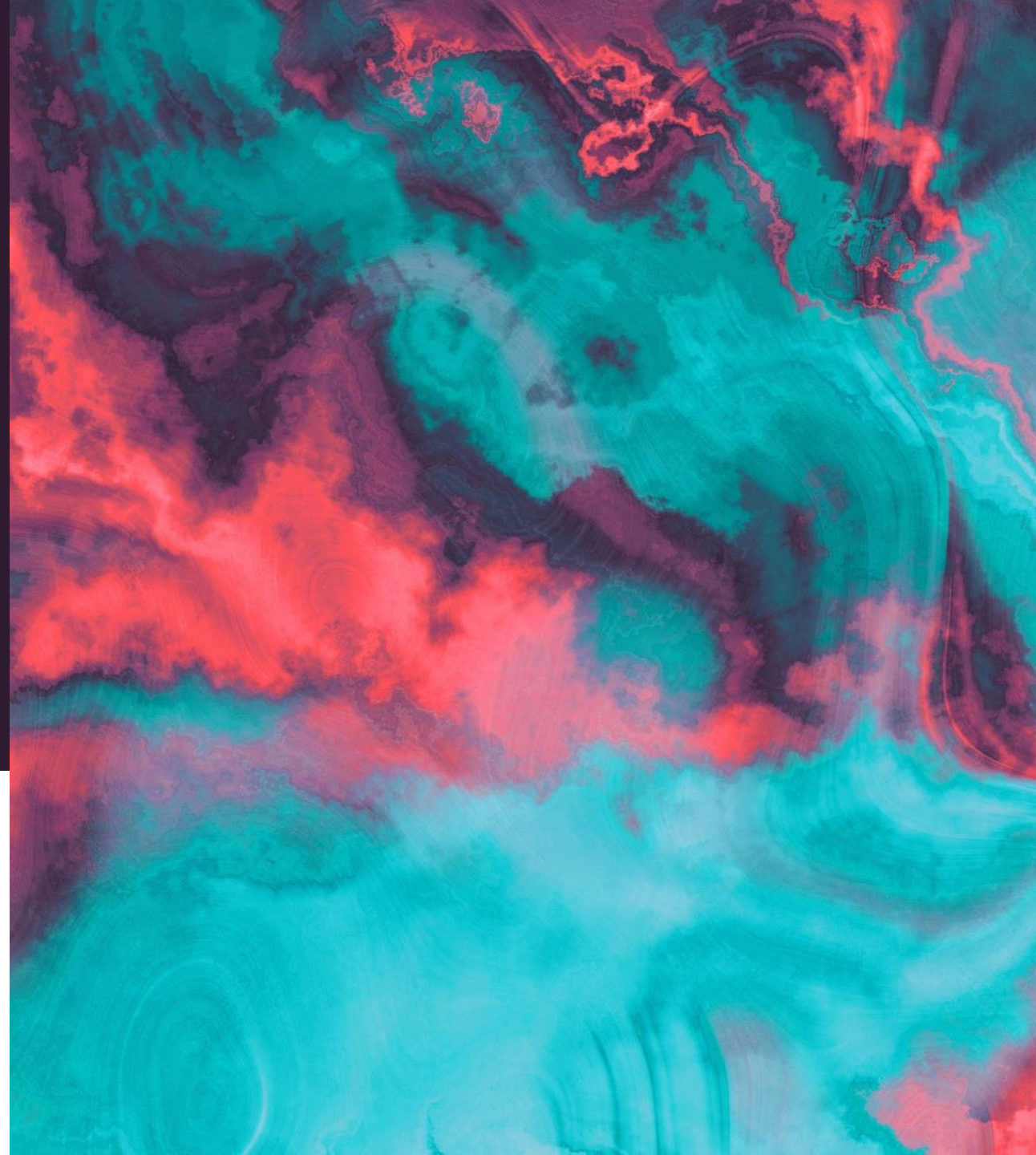
# Supervision

How are supervisors identified, trained and deployed?



# Peer Supervision

How are peer values understood,  
identified, and supported?



# Poll question

## **Question 4 –**

Have you read or reviewed NAPS guidelines?

Yes

No



# National Practice Guidelines for Peer Specialists and Supervisors

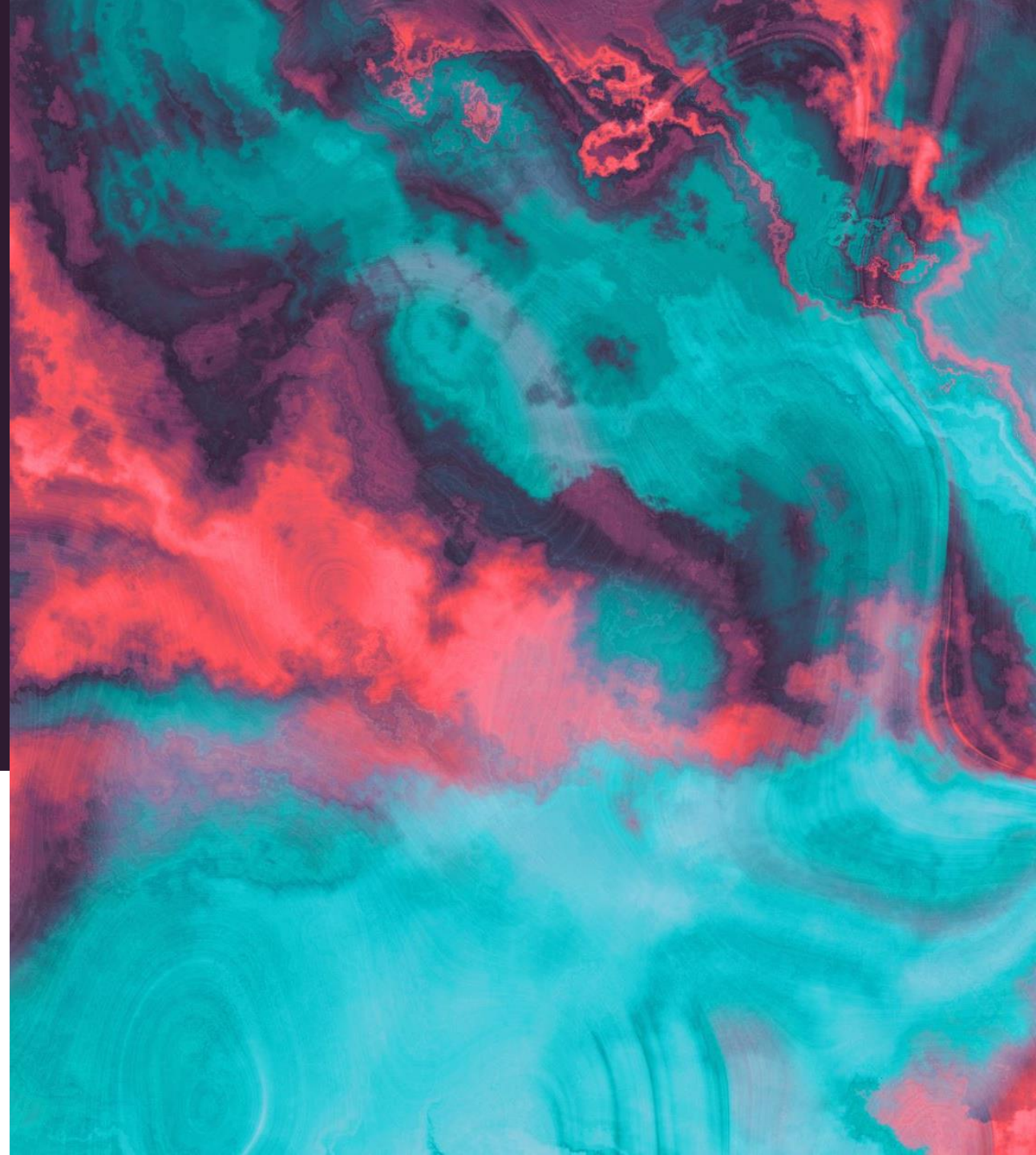
<https://www.peersupportworks.org/>

National Practice  
Guidelines for Peer  
Specialists and  
Supervisors



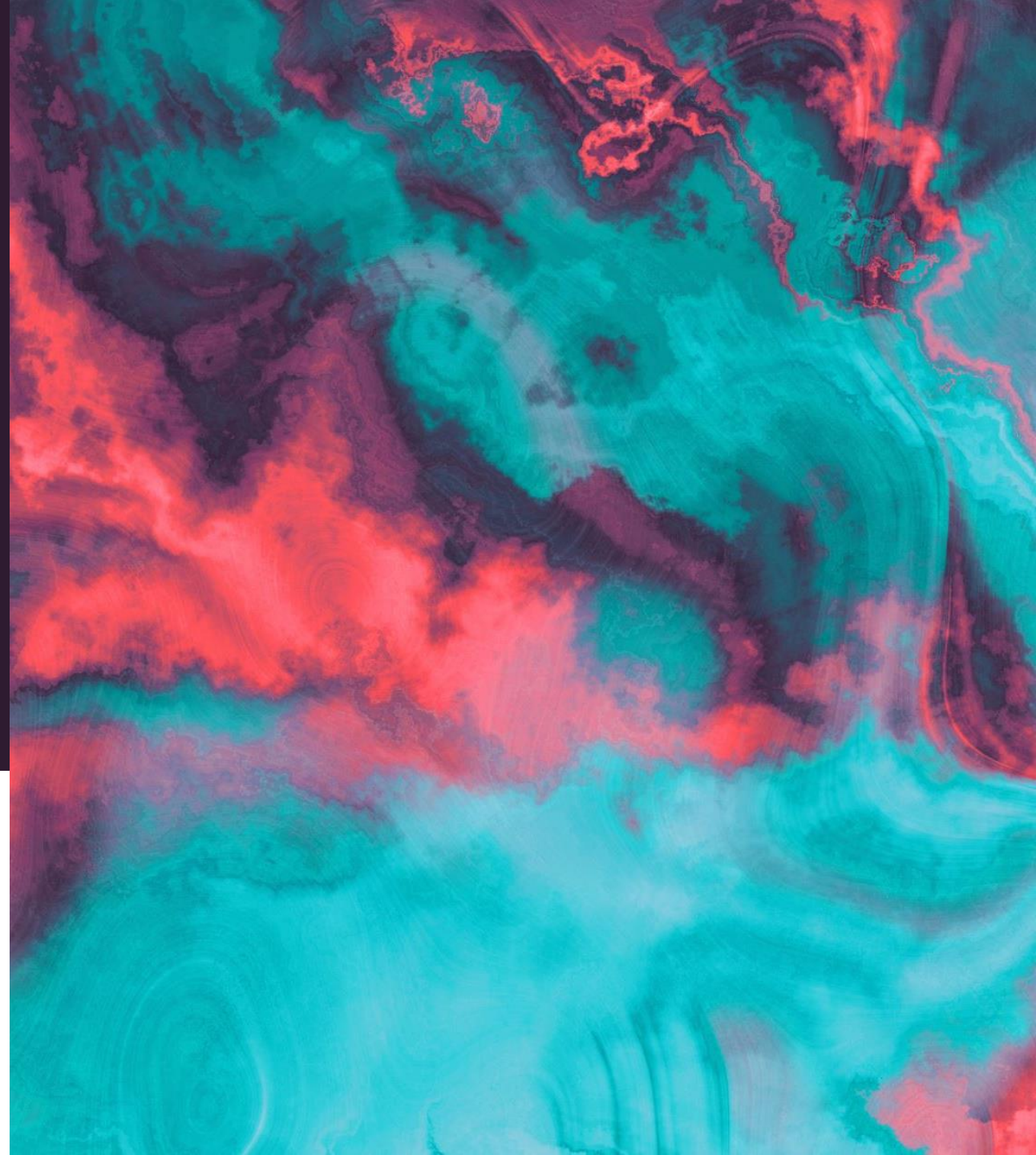
# What's a Supervisor to do?

- Attitude Adjustment
- Model Transparency
- Participate in Mutual Learning
- Support Network Building

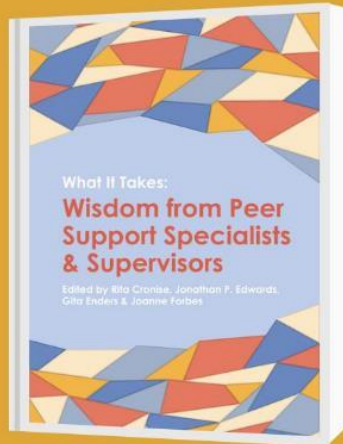


# Remedies and Pathways

Chat and audience suggestions



# New Resource



**AVAILABLE  
NOW IN  
KINDLE AND  
PAPERBACK  
EDITIONS!**

**What it Takes:  
Wisdom from  
Peer Support  
Specialists &  
Supervisors**

**ORDER NOW**

Edited by  
Rita Cronise, Dr. Jonathan P.  
Edwards, Gita Enders, and  
Dr. Joanne Forbes

All proceeds go to the National  
Association of Peer Supporters  
(N.A.P.S.)

**Available on Amazon**

# Closing

The background of the slide is an abstract, textured composition of teal and red colors. The teal is the dominant color, appearing in various shades from light to dark, with some areas showing a fine, wood-grain-like texture. The red is interspersed, appearing as vibrant, somewhat irregular patches and streaks, particularly on the left side and in the lower right. The overall effect is organic and dynamic.

Questions and  
Comments



# References

National Association of Peer Supporters (N.A.P.S.) (2019). **National Practice Guidelines for Peer Specialists and Supervisors**. Washington, D.C.

<https://www.peersupportworks.org/wp-content/uploads/2021/07/National-Practice-Guidelines-for-Peer-Specialists-and-Supervisors-1.pdf>

**Previous SHARE! Supervision Conferences:** <https://shareselfhelp.org/programs-share-the-self-help-and-recovery-exchange/supervising-peers-conference/>

# Contact Us



**Jonathan P. Edwards, PhD, LCSW, ACSW, NYCPS,**  
[jphilipedwards@msn.com](mailto:jphilipedwards@msn.com)



**Joanne Forbes, PhD, CPRP, Consultant,**  
[forbesjl@rutgers.edu](mailto:forbesjl@rutgers.edu)



**Amy Spagnolo, PhD**  
[spagnoam@shp.rutgers.edu](mailto:spagnoam@shp.rutgers.edu)

# Contact Us



**Gita Enders, LMSW, MA, CPRP, NYCPS,**  
[gita.enders@nychhc.org](mailto:gita.enders@nychhc.org)



**Rita Cronise, MS, ALWF,**  
[rita.cronise@rutgers.edu](mailto:rita.cronise@rutgers.edu)